



Greetings!

2012 is here – best wishes! – and from the looks of it, Sarasota parks are already bursting with activities, learning, and fun. Read on to hear more about this Zebra Longwing and a whole lot more -



COMING EVENTS

In This Issue

[Upcoming Events in Parks](#)

[Chapter Activities](#)

[Culverhouse Update](#)

[A Few More Things...](#)

[The Chapters](#)

[Events & Resources](#)

[FOSCP Board Dates](#)

[Got News?](#)

[Did you know?](#)

[Regattas](#)

[Economic Engines](#)



FOSCP [Chapters](#)

(Have a better link for your Chapter? Let us know!)

Friends of . . .

17th Street Paw Park

[Arlington Park](#)

[Casperson Beach Park](#)

Challenger Park

[Culverhouse Comm. Garden](#)

[EC4S](#)

[Englewood Comm. Garden](#)

[Garden at the Springs](#)
[Englewood Farmer's Market](#)

[Indian Mound Park](#)

[Lemon Bay Park](#)



- January -

Tuesdays and **Wednesdays**, mobility challenged residents and visitors can enjoy tours of the Legacy Trail via the **all-volunteer, pedal-powered Surrey** at the Dona Bay Trestle, 509 Collins Rd., Laurel. Rides are at 9 and 10 am, and 1 and 2 pm. [Click for all the info.](#)



NOTE: Below are just some of the many things happening in our parks this month. For full info, including how and where to register for specific events, go to [Nature Events for January](#) at FOSCP.org.



Wed. Jan. 4

- Guided Walk at Curry Creek Preserve in Venice, 9 to 11 am.
- Lemon Bay Park Sunrise Bird Walk, 8-10 am.

Thurs. Jan. 5 - Grand Opening of the [Englewood Community Garden](#), 11 am, [1390 Old Englewood Rd.](#)

Fri. Jan. 6

- Plant and Wildlife ID Walk, Red Bug Slough.
- Photo Safari at Urfer Family Park.

[Myakka River Park](#)

[Newtown Estates](#)

[North Port Parks](#)

[North Water Tower Park](#)

[Nokomis Parks](#)

[Palmer Ranch Parks](#)

[Payne Park Tennis Courts](#)

[Phillippi Estate Park](#)

[Red Bug Slough](#)

[Rothenbach Park](#)

[Sarasota Adaptive Rowing](#)

[Shamrock Park](#)

[T. Mabry Carlton Reserve](#)

[Ted Sperling Park at S. Lido](#)

[The Legacy Trail](#)

[Therapeutic Recreation](#)

[Urfer Family Park](#)

[Venice Community Center](#)

[Woodmere Park](#)

You could . . .

[Become a Volunteer](#)

[Start a Chapter](#)

[Become a Member](#)

If you start a Chapter, create a website or Facebook group, or begin chirping about parks on Twitter, please let us know.

foscpnews@gmail.com



Mon-Tues. Jan. 9-10 - FOSCP folks will be harvesting gun range casings - all welcome.

Wed. Jan. 11 - Nature walk at Manasota Scrub Preserve, 9-11 am.

Thurs. Jan. 12 - Guided walk in the Pocono Trail Preserve in Nokomis, with local historian Nancy Eaton and Environmentalist Jeff Weber, 9-11 am.

Fri. Jan. 13 - Early Bird Nature walk with Jennifer Rogers at Shamrock Park, Venice, 8-9:30 am.

Sat. Jan. 14 - Hay Ride at the Carlton Reserve, 7:30 am to noon.



Sun. Jan. 15 - Casual bicycle ride through Rothenbach Park with naturalist Jennifer Rogers, 8:30-10:30 am.

Tues. Jan. 17 - Phillippi Estate Park - "Know Your Niche" nature walk with Jennifer Rogers, 8 am-9:30 am.

Sat. Jan. 21

- Guided walk at Manasota Scrub Preserve, Englewood, 9-11 am.
- [Ringling Causeway Bridge Run](#), 6:30 am.

Sun. Jan. 22 - Come out to Grand Tours Kayak Center in Placida for the **Paddle to Battle Lung Disease**. [Click here](#) for all the info about this benefit for **Rick Storsberg**, a longtime park ranger and community

Events

[Phillippi Farmhouse Market](#)

[Englewood Farmer's Market](#)

[January Nature Events](#)

[January Parks Calendar](#)

Resources

[List of Parks](#)

[Nature Trails & Preserves](#)

[Discover Natural Sarasota](#)

[Benefits of Parks](#)

[Florida Friendly Yards](#)

[Community Development Tools](#)

[Recreation Centers](#)

FRIENDS OF
SARASOTA COUNTY PARKS 

FOSCP Board Meetings

FRIENDS OF
SARASOTA COUNTY PARKS 

2012

All at 4:30 at Twin Lakes
Conference Room unless
noted: _

January 26
February 23
March 22 (in North Port)
April 26
May 24
June 28
July 26
August 23
September 27
October 25
November 15
December 20

volunteer.

Tues. Jan. 24 - Head out to [Rothenbach Park](#) for the a joyous [Air Potato Pick-Up](#), 9 am to Noon.

Fri. Jan. 27 - Discovery Kayak Program with Naturalists **Kenya Leonard and Jennifer Rogers**, Lemon Bay Park. Noon to 3 pm.



For more about all these events, including registration info, head over to [FOSCP.org](#) for [Nature Events](#).

- Down the Road -

Feb. 25-26 — **Sarasota Invitational** - First Regatta of the Season at Benderson - (more below).

March 24, 2012 - [Sarasota Springfest](#) at Palmer Ranch.

March 25, 2012 - **The Tour de Parks** is set for March 25, 2012, to be held in conjunction with the City of Venice's 85th Anniversary Celebration. Depart from the Historic Venice Train Depot and use the Bicycle/Pedestrian overpass, which will connect the 10 miles of trails north of Hwy 41 with the 10 miles of trails south of Hwy 41.

June 18-20 - [National Conference on Volunteering and](#)

Got News?

The **deadline** to share your events and updates in our next newsletter is **Jan. 27th**.

FOSCPnews@gmail.com.

Did you know that FOSCP volunteers give over 24,000 hours of their time to Sarasota parks each year? Given that it's the season, when you see a FOSCP volunteer, tell them "thanks."

Join Our Mailing List!

Forward to a Friend

2012 Benderson Regattas

The 2012 rowing races begin in February and volunteers will be needed. If you have some time, let Terry know.

Feb. 25-26 -- **Sarasota Invitational**

April 13-14 -- **FIRA (Florida Intercollegiate Rowing Association)**

April 15 -- **FSRA Sculling**

[Service](#) in Chicago.

Much more on the [County Calendar](#).

Send your events to FOSCPnews@gmail.com, and share them with us on [Facebook](#).



Chapter Activities

Breakfast with Santa at Newtown Estates



Breakfast with Santa on Dec. 17th was a huge hit even before Santa arrived, thanks to the gymnastics demonstration and instruction. Hundreds attended - you can see more pics by following the link from [FOSCP's home page](#).

~~~~~

### Friends of the Legacy Trail Meets Jan. 3

The group meets at 6 pm at Oscar Scherer. This month's agenda includes discussions by Paula Wiggins and Ed Wolfenbarger, as well as consideration of:

- Upcoming 2012 Events.

Championships (Florida Scholastic Rowing Association)

April 28-29 -- FSRA Sweep Championships

May 12-13 -- Southeast Youth Championships

### Parks as Economic Engines



Visitors, hunters, fishermen, campers, boaters and swimmers using Connecticut parks, forests and boat launches **generate \$1 billion annually** for the economy of the state, the first analysis of the economic impact of outdoor activities on state lands has found.

From [The Day.com](#)

- Request for FLT Dog Walk?
- Depot Information Center Saturdays (8:30 to 11:30). Scrub Jay volunteers.
- Hospitality Information tables throughout the season-OJT?
- Tour de Parks March 25-volunteers- planning a family ride in addition to three rides?

~~~~~

New Web Resource for Carlton Reserve

Friends of the Carlton Reserve have a terrific **new website** with an easy-to-navigate, comprehensive assortment of information about the Reserve, from its **Calendar** to useful guides to Biking, Birding, Hayrides, Hiking, History, Horses and much, much more. Russ Johnson credits **Sherm Stratton** for both inspiration and perspiration.

~~~~~

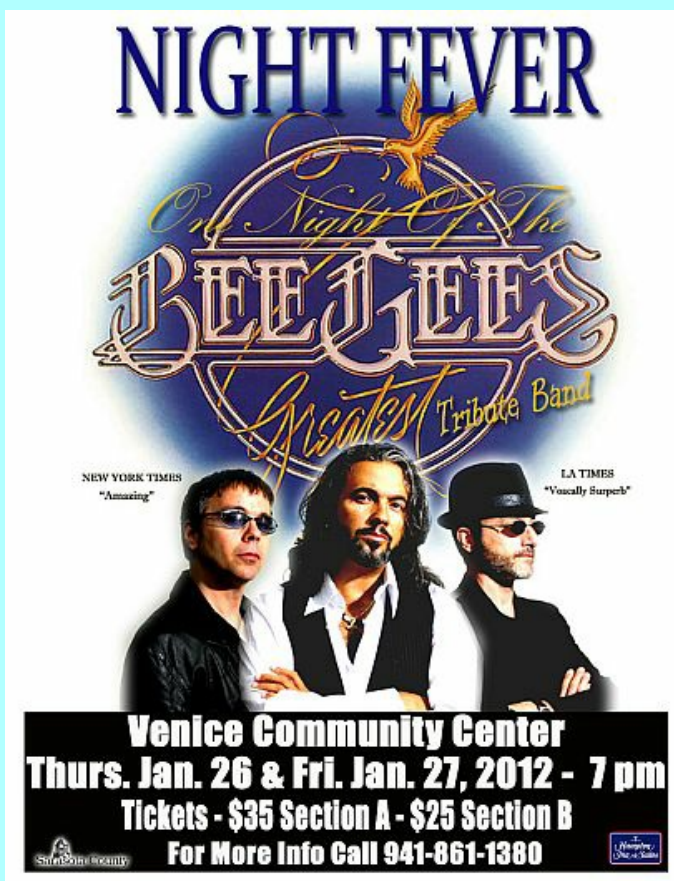
## **Community Garden Opening in Englewood**

You can find out more about **Englewood Community Garden's** Jan 5th Grand Opening at the **EC4S Facebook Page**. Come meet the Gardeners at 11 a.m., 1390 Old Englewood Rd.

~~~~~

Legendary Voices in Venice

Buddy Holly - not personally, but a tribute to the music legend - takes place Fri. Jan. 13th at the Venice Community Center. Then on the 15th, Roy Orbison, Dolly Parton and Connie Francis get their turn. And that's not all: Thursday and Friday, Jan. 26-27, you can enjoy Night Fever by an all-Canadian Bee Gees tribute band. **Get all the info here.**



~~~~~

## Chapters Gathering

Members from several Friends Chapters met at Twin Lakes Park in December to network and chat about Social Media. Catherine Dente of **Friends of Culverhouse Community Garden** talked about some of the ways they are utilizing Facebook to connect,



share, and record their efforts. (More on those efforts below.)

Tom Matrullo then discussed some of

the ways in which **Twitter**, **Facebook**, **Flickr** and other tools form building blocks to integrate communities of interest through what Bill Gates called the "**digital nervous system**" of the Net. Hopefully this conversation will continue, either through future gatherings, or via - you guessed it - social media!

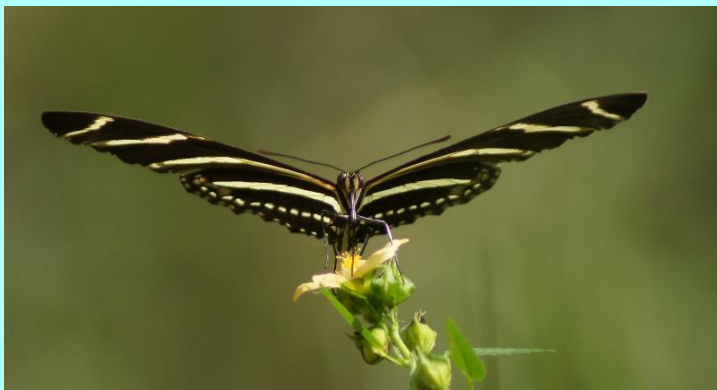
Follow us on [twitter](#)

## Zebras in Sarasota

Sarasota Naturalist and Guide Jennifer Rogers writes to say:

*We've been seeing lots of zebra longwings in **Rothenbach Park** over the past month or so.*

*During an exotic plant removal afternoon at Rothenbach Park on November 30th, we were fortunate to see a zebra longwing butterfly alight and lay eggs on one of Florida's native passion flower vines. Elsewhere, during a nature program at Phillippi Estate Park on Dec 6th, participants and I saw a zebra longwing butterfly alight and lay eggs on a native passion flower vines in the hammock; a week later during a volunteer work morning, we saw the caterpillars of the zebra longwing butterfly . . .Cool stuff!!*



As noted above, Jennifer, Lynda Eppinger, and the **Friends of Rothenbach Park** will be at the park on Jan. 24th to renew the battle against the mighty Air Potatoes.





  
Sarasota County



**Rothenbach Park**  
**Air Potato Pick-Up!!**  
**Tuesday, January 24<sup>th</sup>**  
**9 a.m. - noon**



***Be a Habitat Hero and  
help us maintain the habitat!!***

RSVP or for more information contact  
Parks Naturalist, Lynda Eppinger at  
[leppinge@scgov.net](mailto:leppinge@scgov.net);

or contact the Sarasota County Call Center at  
941-861-5000 and ask about  
Rothenbach Park Air Potato Pick-Up



**It Starts  
in Parks™**



## Update on the Culverhouse Community Garden

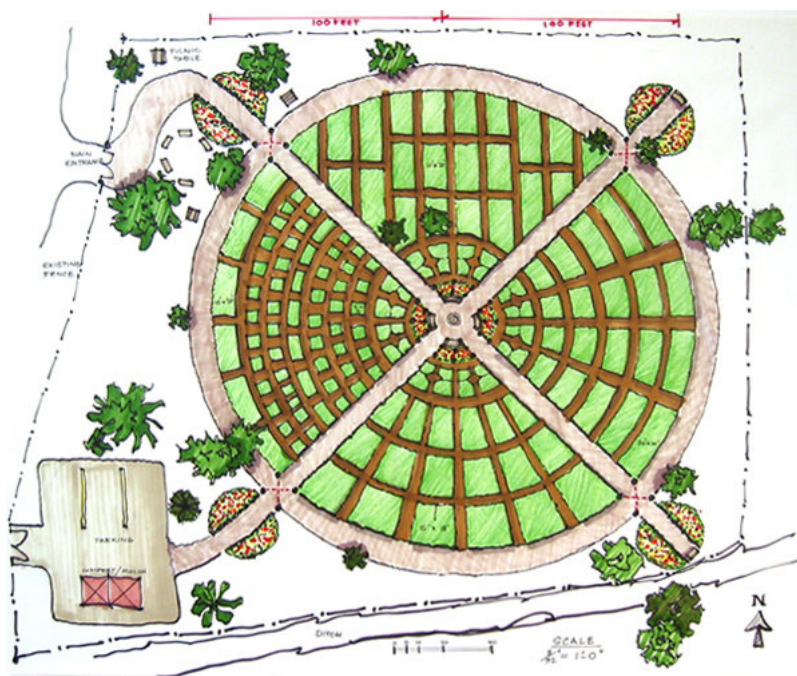
From Catherine Dente:

The garden leadership Team met with the county manager of the new Culverhouse Nature Park in mid-December. We discussed several logistical topics:

- the exact footprint of the community garden, an outline of the chain link enclosure fence, the location of the rustic park fences, as well as some rather subtle topics: drainage, mowing, and timing of park access.

One of the decisions the Leadership Team made as a result of this meeting is to halt new applications for the time being

- probably until we have a chance to actually lay out our garden plots. We will keep a waiting list, though, and continue to let county residents know about this beautiful Nature Park and Community Garden in the heart of Palmer Ranch. 60 plots are spoken for, and we anticipate having room for as many as 100, eventually.



Establishing a large community garden in a natural area without any electric or plumbing service has been quite a challenge, and more expensive than we ever thought.

But we have been very successful with (1) our fundraisers (Founder's Bricks, Raffles, Auction, Tee-shirts), (2) writing and receiving a large county Neighborhood Grant, and (3) attracting the generosity of a few very generous donors.

The Culverhouse Family is our biggest benefactor, having dug the well for us while they still owned the land, participating in all of our fundraising, and putting us in touch with excellent local and national resource people for advice.

These combined funding avenues have helped us nearly reach our goal of between \$28-\$30K to pay for the pumps, a large cistern, a pressure tank, the solar panels, controllers, batteries, skilled installation labor, etc to provide solar power for the pumps, a network of underground PVC pipes to deliver the water to various locations, a perimeter fence, and a garden shed to house the solar equipment and various garden tools. Whew!

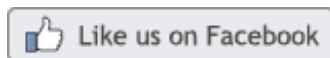
We are working with the new park manager to make sure all the installations go smoothly and our garden can open as soon as possible. Meanwhile he is working with engineers to create the access to the park from McIntosh Rd.

With access, county residents and our community gardeners can enjoy a gorgeous new amenity in the heart of Sarasota County.

**[See photos, a video, and notes from several organizing meetings on Facebook](#)**

**Visit the county's website** to view the concept plan.

Our special thanks to the Culverhouse Family, the Schober Foundation, Freeman Family, Leila Frangie, Sarasota County Cooperative Extension, County Parks & Rec. Dept., County Neighborhood Grant program, Keep Sarasota Beautiful, The Florida House, FOSCP, PR Master Association, Progressive Water Resources, Green Sustainable Consulting & Certification, Green Homes & Buildings Pro, Inc., Domenick's Blinds, Broedell's Plumbing Supply, Ardaman Assoc., Dunkelbergers Engineering, Ruck Brothers Bricks, and Derossiers Pavers, for the many ways they have supported the Culverhouse Community Garden.



## **A few more things. . .**

The spirit of volunteerism is alive and well in our parks, according to SNN. **Check out this video.**

What's going on at your Chapter? Drop us a note at [FOSCPNews@gmail.com](mailto:FOSCPNews@gmail.com)  
Photos from your events are most welcome! Links to recent FOSCP and Parks events are on the [FOSCP home page](#).

If you like this edition of [FOSCPNews](#), see if your friends might like it too.



For the



I'm Tom M.

## **Contact Friends of Sarasota County Parks**

Info@FOSCP.org || Phone: 941-275-9397

FOSCP South County: 3900 Shamrock Drive, Venice, Florida 34293

FOSCP North County: 4012 Honore Avenue, Sarasota, Florida 34233

